

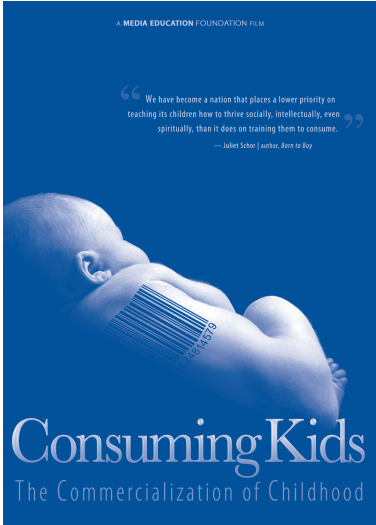
**IMPORTANT FILM SCREENING**

On Friday at 12:00, we will be screening a new film by Media Education Foundation of Northampton, Massachusetts. Featuring Diane Levin, Nancy Carlsson-Paige, and a number of experts, this film will provide an important preview to Dr. Levin’s Saturday keynote. If you are not attending the conference on Saturday, we urge you to not miss this eye opening film.

**Consuming Kids:  
The Commercialization of Childhood**

*Consuming Kids* throws desperately needed light on the practices of a relentless multi-billion dollar marketing machine that now sells kids and their parents everything from junk food and violent video games to bogus educational products and the family car. Drawing on the insights of health care professionals, children’s advocates, and industry insiders, the film focuses on the explosive growth of child marketing in the wake of deregulation, showing how youth marketers have used the latest advances in psychology, anthropology, and neuroscience to transform American children into one of the most powerful and profitable consumer demographics in the world. *Consuming Kids* pushes back against the wholesale commercialization of childhood, raising urgent questions about the ethics of children’s marketing and the impact on the health and well-being of kids.

Feel free to bring your lunch, no matter what option you choose (pay ahead soup and salad, food from the “café,” or your own brown bag), into the Westford Ballroom.



**“We have become a nation that places a lower priority on teaching its children how to thrive socially, intellectually, even spiritually, than it does on training them to consume.”**

Juliet Schor, author of *Born to Buy*

Special Presentations

FRIDAY SCHEDULE	
8:00–9:15 am	Registration Opens/Continental Breakfast
9:15am–11:45 am	Morning Sessions
11:45 am–1:15 pm	Lunch
11:45 am–4:00 pm	Vendors Open
12:00– 1:15 pm	Screening of <i>Consuming Kids</i>
1:30–4:00 pm	Afternoon Sessions
4:00–6:00 pm	Film Festival
4:00–5:30pm	MassAEYC Reception
5:00–6:30 pm	Men’s Interest Group Reception
6:30–10:00 pm	Dinner, Award Presentation, and Dancing

**TABLE OF CONTENTS**

Friday At a Glance . . . . . 2–4

Saturday At a Glance . . . . . 5

Workshop Descriptions. . . . .6–11

General & Lodging Details . . . .12

Registration Details  
 . . . . . inside back cover

Registration Form . . . . back cover

## PROFESSIONAL DEVELOPMENT SESSIONS

All Friday sessions will run for 5-hours. A free continental breakfast will be served. There will be several pay-on-your-own lunch options. Participant numbers will be limited.

### A. Cracking the Code of Creativity

Spend the day discovering your inner creativity. This session will deliver rich and varied developmentally appropriate art explorations. Educators will feel comfortable working with children creating open-ended art experiences daily and make children's art experiences meaningful through thoughtful dialogue. Guiding young children as they grow through daily developmentally appropriate open-ended art experiences is a deep emotional and rewarding experience.

*Julie Ugalde Bakerlis, Educator and Consultant, Anna Maria College, Worcester, MA*

Participants will be eligible to earn .5 CEUs on Friday and .5 CEUs on Saturday. Information will be available at the conference.

### B. Creating Early Childhood Environments that Include and Welcome LGBT Families

Why it is important to talk about gay and lesbian issues...in your school community...in your classroom? This session focuses on how early childhood education administrators, teachers and providers can create environments that are truly inclusive of LGBT families. Topics include: our professional responsibility to affirm every child's family; materials and activities that include all families; and anti-homophobia curriculum and practice.

*Ellie Friedland, Professor, Wheelock College, Boston, MA*

### C. Natural Playscapes: Creating Outdoor Play and Learning Environments for the Soul

Welcome to the world of Natural Playscapes! This all day workshop presents a beautiful overview of the importance of creating natural play spaces for children and guides you through the dreaming and drawing of your own natural outdoor playscape project. For a preview of Rusty's work go to [www.planeteearthplayscapes.com](http://www.planeteearthplayscapes.com)

*Rusty Keeler, Designer and Author, EarthPlay, Spencer, NY*

### D. Including Children with Special Needs in Your Child Care Setting

This workshop will introduce participants to working with children with special needs. The various types of special needs will be presented; Individual Education Plans (IEP) will be explained; and specific strategies for adapting activities for children with special needs will be offered.

*Maggie Donahue, Integrated Preschool Teacher, Barnstable Public Schools, Adjunct Faculty, Cape Cod Community College*

### E. Beyond PowerPoint Presentations: Effective Training Strategies

In this interactive session, the facilitators will present a series of exercises to help you discover how to engage workshop participants as partners in their own learning process. We will explore adult's specific needs and how you can incorporate them to create a positive learning experience for all participants. We will discuss universal elements of effective workshop planning, facilitation, implementation and evaluation. You will also have the opportunity to practice your skills!

*Marlies Zammuto, Trainer and Consultant, Zammuto Associates, Andover, MA and Nancy Toso, Trainer and Consultant, Parenting Resource Associates, Lexington, MA*

### F. Linking Curriculum to Assessment: Authentic Assessment in Practice

What does authentic assessment look like? We will explore how to utilize assessment methods that accurately mirror goals and objectives of the curriculum. Small groups will work with the Early Learning Standards to put theory into practice. We will also discuss how to create positive environments, the importance of learning centers, and the impact of the physical environment in the classroom to further learning.

*Mary F. Police, Building Blocks Consulting, Yarmouth Port, MA*

## G. Being Trusted to Co-raise a Child: Building Family Connections and Support

This workshop will explore supporting families in their job of raising children. Strategies for linking parents to community services, training on parenting skills, information on preventative measures to assist families in crisis, and opportunities for parent-child activities will be presented. Workshop is based on Strengthening Families concept, which has been employed in the presenter's program.

*Johanna Booth-Miner and Sarah Miner, Directors, Live and Learn Early Childhood Center, Lee, NH*

## H. Designing Child-Centered Curriculum in Family Child Care Programs

This training will guide family child care professionals in the use of developmentally appropriate curriculum for mixed-age groups in their programs. Topics include planning open-ended activities, following children's interests, using assessment results to plan curriculum, and adapting curriculum plans to meet the individual needs, cultures, and skill levels of children in their care

*Linda Schumacher, Early Education and Care Specialist, IEPD, Worcester, MA*

## I. Building Relationships, Promoting Healthy Development in Infants and Toddlers

Come join us for this interactive workshop that looks at how our relationships with families, colleagues, and children impact development. Understand the role culture plays in cultivating relationships. Take a look at your current communication and conflict resolution skills. Learn strategies for having an environment that promotes child development while growing relationships.

*Tracey Bromley Goodwin, The Power Within, Educational Consulting and Coaching, East Sandwich, MA*

## J. Supporting Families Through a Culturally Competent Lens

Families and schools are two main environments for children. If there is a disconnect, children's development may suffer. This session will examine culturally-based values, beliefs, and practices, and parent/educator interactions. Strategies for ensuring positive relationships based on mutual respect will be explored.

*Cindy Horgan, Parent Educator, and Marie Enochty, Educator & Consultant, Cape Cod Children's Place, N. Eastham, MA*

## K. Exploring the Principles of Reggio and Bringing Them to Life in a Preschool Setting

This workshop provides a unique opportunity to become inspired by the remarkable work that is happening in Reggio-inspired preschools in Massachusetts. Members of the North American Reggio Emilia Alliance (NAREA) will share vignettes of their daily work, stories, documentation panels, video clips and reflections on planning and provocations. We will also explore how elements of this approach can be incorporated into any preschool environment and can blend with any curriculum you are currently using.

*Susan MacDonald, Director of Children's Services and Lucinda Burk, Faculty, The Children's Garden at The Cambridge School of Weston, Joanne Pressman, Director, Community Nursery School, Lexington*

## L. Brains at Risk

Brain development and learning can be compromised by a host of risk factors, some in the external environment, others in the internal landscape of the child's genetics. This session will answer these questions: Can a brain that has been disadvantaged be enriched to its maximum potential? And if so, how?

*Jeanine K. Fitzgerald, Certified Behavior Specialist, Better Behavior Bureau, Hubbardston, MA*

## M. Leading on Purpose: Emotionally Intelligent Early Childhood Administration

Relationships are at the heart of all learning. Emotional intelligence, reading people as well as we read books, nurtures relationships. Research in neuroscience confirms and explains the process of building and maintaining healthy, dynamic, supportive relationships for teaching. Come and reflect on your style and build new skills to be a stronger leader.

*Holly Elissa Bruno, Educator, Consultant, Author, Bruno Duraturo Consulting, Sterling, MA*

## FRIDAY EVENTS

*Information on Friday Events  
Will be Posted Soon*

### **Buffet Dinner & Dancing**

A cash bar will be available. The cost is \$25.00. Please indicate that you will be attending on the registration form and send your check with your conference registration fee.

After dinner and the award ceremony, we will present DJ Tommy. Last year, we danced for hours! Rooms at the Regency Inn are only \$105 per night. This is a great way to start your conference experience. Hangout with your friends, work off some stress, and boogie till you drop!



## SATURDAY KEYNOTE ADDRESS

### So Sexy So Soon: The New Sexualized Childhood and What We can Do About It

#### Dr. Diane Levin

Today's children are growing up in an environment saturated with images of sexual appearance and behavior that they cannot fully understand. From a very young age, it influences how they think about being male and female, their bodies, and what they want to be, do, and wear. It can confuse children about the nature of relationships and promote precocious sexuality. Based on her new book, *So Sexy So Soon* (co-authored with Jean Kilbourne), Dr. Levin explores the current situation, how it is affecting children, and how we can work with children and families to promote healthy development in these times.

*Diane Levin is Professor of Education at Wheelock College in Boston, Massachusetts, where she teaches a service learning course on the reconciliation process underway in schools in Northern Ireland and a summer institute on "Media Madness and Children." She has written eight books including: So Sexy So Soon: The New Sexualized Childhood and How Parents Can Protect Their Kids (with Jean Kilbourne), The War Play Dilemma, Teaching Young Children in Violent Times, and Remote Control Childhood?. She speaks around the world on the impact of violence, media and other societal issues on children, families and schools.*

*Levin has been a consultant for a wide range of projects, including five PBS Parents web sites. She was a senior advisor for PBS Families Magazine from 1997 to 2005. Levin has worked on the American Psychological Association's "ACT Against Violence" Project and Consumer Reports annual toy review article and developed statewide violence prevention training for childcare providers for the State of Maine. As a longtime activist, Levin is a founder of Teachers Resisting Unhealthy Children's Entertainment (TRUCE), which prepares materials to help parents deal with the media and commercial culture in their children's lives. She is also a founder of the Campaign for a Commercial-Free Childhood (CCFC), which works to education the public about and end the commercial exploitation of children.*



Saturday At a Glance

#### SATURDAY SCHEDULE

7:15 am	Registration Opens/Continental Breakfast
7:15 am–3:30 pm	Vendors Open
8:30–8:45 am	Welcome and Announcements
8:45–9:30 am	Keynote Address
9:45 am–12:00 pm	Group A Workshops
12:00–1:15 pm	Lunch
1:15–2:45 pm	Group B Workshops
3:15–4:45 pm	Group C Workshops

## MORNING SESSION A

### A1 Stimulating Speech and Language Development in Preschoolers

This session will provide information regarding typical communication/ speech and language development as well as an understanding of when to be concerned about a possible speech and language disorder. Participants will learn strategies to stimulate communication skill development in early education and care settings.

*Jen Berneche Stiles, Speech and Language Pathologist, Northampton, MA*

	ps			fcc
--	----	--	--	-----

### A2 Early Education and Care in Hard Times: What Can We Learn from the Great Depression?

Early education and care programs are challenged by the rising cost of doing business while trying to meet the needs of staff and families. Join a discussion of meeting those needs in new old ways through fund raising, creating free rituals, scheduling, re-using, recycling, carpooling, swapping, bartering, singing and sharing reminiscent of the ways families in the 1930's coped with the Depression.

*Margaret Leitch Copeland, Ed. D.*

i/t	ps	sa	ad	fcc
-----	----	----	----	-----

### A3 More Than Numbers! Assessing and Planning for Meaningful Math

Need help with math activities? This session will help participants find ways to use their observations of children's mathematical knowledge and skills to guide and support mathematical learning, document children's progress, and create their own plan for assessing children's understanding of key mathematics concepts.

*Kay Lisseck and Nancy Ward Lolocono, Early Childhood Consultants, Northampton, MA*

	ps			fcc
--	----	--	--	-----

### A4 How to Speak so Kids Will Listen

Communicating with young children requires a shift in a caregiver's approach to being heard. Participants will learn what motivates children to hear an adults' words and to cooperate, along with techniques adults can use that actually require less talk.

*Bill Corbett, Founder and President, Cooperative Kids, Enfield, CT*



i/t	ps	sa		fcc
-----	----	----	--	-----

### A5 Spoken Word Alive! Ay Ay Ay!

Join Cuban-American Leeny in this participatory workshop for educators. Through exercises and improvisations, bring words alive with vocal variety, healthy phonation, movement/gestures, and characterizations. Practice pronunciation of Spanish words and vowels. Expand your cultural circle by acting out a Latino tale. Be prepared to move, challenge yourself and have fun. "Olé"

*Leeny Del Seamonds, Master Story Performer, Westford, MA*

i/t	ps	sa		fcc
-----	----	----	--	-----

### A6 Project WILD: Nature Inside Out

Learn about an interdisciplinary, conservation and environmental education, pre-K curriculum program that emphasizes wildlife, people and the environment called "Wild About Early Learners." Participants will receive copies of activities, and the complete national Early Learners Guide when available. Please dress for the weather and plan to be outside and in.

*Pam Landry and Stephen DeFlorio, Mass Wildlife, MA*

	ps	sa		fcc
--	----	----	--	-----

### A7 Let's Talk...It Makes a Difference!

Research has shown that the "the size of each child's vocabulary correlates most closely to...the number of words the parents spoke to the child" This workshop turns research into practice, promoting the importance of talking while sharing specific techniques parents and educators can use, in a form that is engaging, strength-based, easily accessible, and culturally relevant.

*Lauren Leiken, Cambridge Alliance for Children, MA*

i/t				fcc
-----	--	--	--	-----

### A8 Puppet Fun: Incorporating Puppets into your Work with Young Children

Come and experience an exploration of puppet activities designed to stimulate language, literacy, sensory awareness, problem solving, self-expression, and story creation. We will also discuss incorporating puppets into the MA Curriculum Frameworks.

*Mary Wilson, Pitter Patter Puppets, Owner and Professional Puppeteer, Barnstable, MA*

i/t	ps	sa		fcc
-----	----	----	--	-----

### A9 Fun Hoops to Jump Through: Teambuilding for Staff through Games & Communication

This workshop will explore the importance of good communication and humor in the workplace. Participants will discover simple easy activities and motivators to help create a cohesive work team. Learn to bond together as a group and have shared dreams and investment. All participants will leave with something they can implement at their center.

*Johanna Booth-Miner and Sarah Miner, Directors, Live and Learn*

i/t	ps	sa	ad	fcc
-----	----	----	----	-----

## MORNING SESSION A, CONTINUED

### A10 No Curriculum in the Summer? C'mon FCC Providers— it's ALL Curriculum!

This will be a fun, hands-on, brainstorming/participation session with great ideas for outdoor summer FCC curriculum and how it ties into the Massachusetts proposed Family Child Care regulations regarding assessment of children's progress. You will leave with a set of plans to create curriculum for a wonderful summer session at your program.

*Kathryn Webber, Family Child Care (FCC) Licensor, EEC, Springfield, MA*

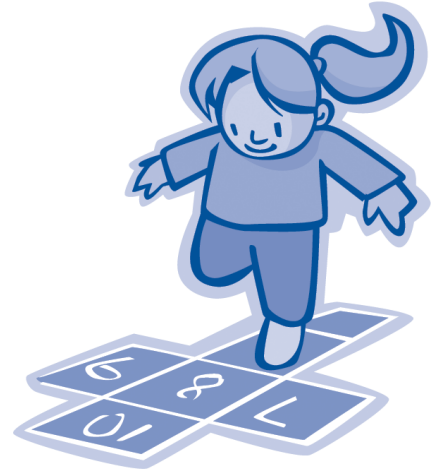
				fcc
--	--	--	--	-----

### A11 Linking Science and Literacy: How Teachers can Create Meaningful Experiences.

This session will provide all participants with ideas on how to incorporate science into their existing, or new literacy program. At the root of deep understanding of science concepts and scientific processes is the ability to use language to form ideas, theorize, reflect, share and debate with others, and ultimately, communicate clearly to different audiences.

*Nina Araujo, Child Development Consultant and Author, Carlisle, MA*

ps	sa			fcc
----	----	--	--	-----



### A12 So Sexy So Soon: The New Sexualized Childhood and What We Can Do About It

This workshop will be a follow-up to Dr. Levin's keynote address. Today's children are growing up in an environment saturated with images of sexual appearance and behavior that they cannot fully understand. Dr. Levin explores the current situation, how it is affecting children, and how we can work with children and families to promote healthy development in these times.

*Dr. Diane Levin, Educator, Advocate, and Author, Wheelock College, MA*

i/t	ps	sa	ad	fcc
-----	----	----	----	-----

### A13 Managing the Power Dynamics when Women Work with Women

Women share their most intimate secrets with each other. They celebrate each other and cheer each other through the hard times. But at the workplace, gossip, negativity, and backbiting can tear down sisterhood. The children are watching! Join this session to obtain tools and strategies to create gossip-free work environments.

*Holly Elissa Bruno, Educator, Consultant and Author, Sterling, MA*

i/t	ps	sa	ad	fcc
-----	----	----	----	-----

### A14 Why Does He Do That, And How Can I Help? Understanding our Autistic Students and Developing Strategies for Real Life

This workshop will focus on understanding the complicated behavior and breaking through the professional jargon that surrounds the education of children on the Autistic Spectrum. We will spend our time dealing with practical strategies and problem solving common difficulties.

*Janice Smestad, Empathy Associates, Merrick, NY*

i/t	ps	sa		fcc
-----	----	----	--	-----

### A15 Helping Children Solve Their Own Problems

If we want children to be strong, independent, and able to stand up for themselves, they must be able to solve their own problems. Learn how to teach children to communicate assertively, understand another person's point of view, evaluate their own behavior, think of alternative solutions, and make realistic plans.

*Barbara Capaldo, Educator, Insight Education, Baldwinville, MA*

i/t	ps	sa		fcc
-----	----	----	--	-----

### A16 Authentic Assessment

Why are teachers incorporating authentic assessment into their curriculum? We will identify the components of an authentic assessment and explore its many benefits.

We will practice conducting an authentic assessment by reviewing children's work samples, and observing and documenting children in action.

*Judy Battista, Consultant, IEPD, Worcester, MA*



i/t	ps	sa	ad	fcc
-----	----	----	----	-----

### A17 Applying Universal Design to Help ALL Preschoolers Learn

Universal Design for Learning means creating environments, curriculum, instructional and assessment strategies that accommodate the widest variety of young children's learning styles and needs. UDL embraces diversity and provides multiple ways of learning and expressing knowledge. In this session we will examine what this looks like in preschool, kindergarten and family child care so that families and teachers are on board and well informed.

*Su Theriault, Mentor Coordinator, Boston Ready Project*

	ps	sa	ad	fcc
--	----	----	----	-----

## AFTERNOON SESSION B

### B1 Creating a Cohesive Community through Group Challenges, Problem Solving and Teambuilding

A hands-on, body moving, feet stomping, no time to sit experience to keep K-8th graders engaged in your after-school program. This workshop will provide educators with activities and philosophies to promote a safe and respectful environment during the after-school hours.

*Peter Sawtell and Elisabetta Fiore, After-school Co-Directors, Live and Learn, Lee, NH*

sa fcc

### B2 Early Sprouts: Gardening and Nutrition Experiences for the Young Child

This presentation shares our work on the research-based garden and nutrition program Early Sprouts Gardening and Nutrition Experiences for the Young Child. The presentation will be a multi-sensory exploration of our project and includes strategies for incorporating vegetables, nutritionally sound recipes, family outreach, and systemic implementation.

*Ellen Ellsberg Edge, Director, Child Development Center, Keene State*

ps sa fcc

### B3 When Should I Worry? Motor Development for Children 0-5

Often, teachers and caregivers are the first to notice children's motor delays and difficulties. This workshop will provide information regarding typical gross and fine motor development and "red flags" indicating problems with the acquisition of developmental milestones. The processes for referrals will be addressed.

*Tamara L. Kucharski, M.S., OTR/L and Janna Kucharski-Howard, PT, DPT, MSM, Allied Therapy, Chelmsford, MA*

i/t ps fcc

### B4 Including Men in the Lives of Young Children

A panel of men including teachers, fathers, family childcare providers, early intervention specialist, and an administrator talk about why it is important that men are involved in child care and early education, why they personally became involved and why they stayed. A report from the World Forum of Men in Early Education will be included.

*Craig Simpson Infant/Toddler Team Leader, Yawkey Center for Early Education and Care, Boston, MA*

i/t ps sa ad fcc

### B5 Don't be Scared! Woodworking in the Preschool Classroom

"Woodworking." The word alone strikes fear in the heart of many a cautious caregiver! But a woodworking area in a preschool classroom/home, when properly supervised, equipped, and maintained, may be one of the most valuable experiences we can provide.

*Patricia A. Sawyer, Teacher, CTI Head Start, Lowell, MA*

ps fcc

### B6 Promoting Self-Esteem Through Music

Have lots of fun while learning songs and specific techniques that nurture self-esteem, promote disability awareness, and enhance respect for others. Also see how music can enhance confidence with phonics and mathematical concepts. Songs and related activities will be demonstrated to illustrate how music can be used to help children feel good about themselves and others.

*Fran Friedman, Musician and Songwriter, Wayland, MA*

i/t ps fcc

### B7 Understanding and Negotiating Cultural Differences

Conflicts with staff and parent often start in the infant room, where cultural differences can raise many questions. We may feel that our core values and "bottom lines" are being challenged. The session will focus on identifying cultural issues and engaging in strategies to negotiate solutions.

*Ellen Wolpert, Director, Cambridge CPC*

i/t ps sa ad fcc

### B8 Introducing the 2009 Edition of Developmentally Appropriate Practice

Revised, updated, and expanded, the new DAP position statement and book from NAEYC reflects the changes that have happened in research, demographics, and the reality of early education in the 21st century. This workshop will give you an overview of recommended new practices for ages birth-8.

*Lisa J. Strout Executive Director, NAEYC, Lempster, NH*

i/t ps sa ad fcc

### B9 The Project Approach

Combine literature, movement, music, art, cooking, and everything else you've got into one great learning experience—that's the Project Approach. This session will give you the basics of how to implement this curriculum approach in your classroom/home. You'll leave with a step-by-step example of a project to try in your program.

*Miriam Moran Shankman, Educator and Consultant, Long Island, NY*

ps fcc

i/t infant/toddler ps preschool sa school age ad administrative fcc family child care

## AFTERNOON SESSION B, CONTINUED

### B10 Power Struggles: Bringing Down the Intensity while Meeting Your Expectations

Power struggles between adults and children are inevitable. If we can see the struggle as an unmet need, we can take the opportunity to teach. This session will identify practical and clear strategies.

*Jeanine K. Fitzgerald, Better Behavior Bureau, Hubbardston, MA*

i/t	ps	sa		fcc
-----	----	----	--	-----

### B11 Creating a Pro-social Classroom

Participants will look at setting up a pro-social classroom which involves helping children learn to get along with other members of the group, to understand and express their feelings and respect those of others, and to provide an environment and experiences that help children develop social skills.

*Johanna Booth-Miner, Sarah Miner, Geraldine Mathieu and Reanna Valley, Directors and Teachers, Live and Learn ELC, Lee, NH*

i/t	ps	sa		fcc
-----	----	----	--	-----

### B12 NAEYC Accreditation—Open Discussion with NAEYC Council on Accreditation Chair

This workshop will be facilitated by the current chair of the NAEYC Council on Accreditation—the governance structure appointed by the NAEYC Governing Board to oversee the work of the Academy. Discussion around new sources of evidence along with general feedback about the process is the goal for this workshop

*Lori Harris, Chair, NAEYC Council on Accreditation, Plainfield, NH*

i/t	ps		ad	
-----	----	--	----	--

### B13 Open the Doors to Learning: Linking the Creative Arts and Children's Literature

Come and learn how to use the creative arts: visual arts, drama, music, storytelling, poetry, and creative movement to bring favorite stories to life while promoting early literacy skills. Bring your favorite children's book and together we will create a plan to infuse the Arts into your curriculum.

*Debby Rawson and Diana Kane, Early Education and Care Consultants, MA*

	ps			fcc
--	----	--	--	-----

### B14 "I Hear You" Language Development for Babies/Toddlers that Promotes Linguistic Diversity

Babies are born with wiring that enables them to make all sounds relevant to language and speech. Participants will learn techniques, strategies, and receive handouts to help them create a language rich environment for toddlers.

*Linda Davis Spoor, Lead Toddler Teacher, Live and Learn ELC, Lee, NH*

i/t				fcc
-----	--	--	--	-----

### B15 Alphabet Fitness: Linking Fitness to the ABCs

Come and learn about an innovative new strategy to fight early childhood obesity and stress related disorders while at the same time promoting early literacy. Alphabet Fitness helps children's muscles to learn and perform well through fun and playful workout routines. Designed by a physical therapist, it will benefit you as well.

*Karen Voght, Wellness, Inc.*



	ps	sa		fcc
--	----	----	--	-----

### B16 How Do We Get These Kids to Listen? Communicating More Effectively with Children

This workshop will focus on developing very clear and effective strategies for maintaining a positive environment; making sure that you really are saying what you think you're saying, and that all the children really understand

*Janice Smestad, Empathy Associates, Merrick, NY*

	ps	sa		fcc
--	----	----	--	-----

### B17 Public Policy, Messaging & Advocacy: A How-to-Guide with Practical Activities

This activity-based workshop provides simple time-effective steps to building a great message, getting it out to the right people and driving the public will. Participants will create an advocacy plan and message.

*Katie Magrane and Julie Albert, Massachusetts Afterschool Partnership (MAP), Boston, MA*

i/t	ps	sa	ad	fcc
-----	----	----	----	-----

### B18 Understanding Sensory Integration Disorder

SID is a disorder of the central nervous system in which sensory information is not effectively processed. Children with this disorder have difficulty learning, playing, and making friends. In this workshop, you will learn to recognize the symptoms of SID and develop strategies to help young children manage their behavior.

*Barbara Capaldo, Educator, Insight Education, Baldwinville, MA*

	ps	sa		fcc
--	----	----	--	-----



## AFTERNOON SESSION C

### C1 Keeping Empathy Alive: A Second Helping on Building a Cohesive Community

By request from last year's conference, a second helping of a hands-on workshop to keep your K-8 after-schoolers engaged and committed to your program. This workshop will provide educators with more advanced team-building games and activities to create a safe, respectful, fun and cohesive after-school program.

*Peter Sawtell and Elisabetta Fiore, After-school Co-Directors, Live and Learn ELC, Lee, NH*

		sa		fcc
--	--	----	--	-----

### C2 Empowering Infants and Toddlers with the Gift of Sign

Come discover the benefits of incorporating sign language into your infant and/or toddler program. This workshop will introduce participants to basic signs such as "eat," "more," "milk," "all done," and "please." Participants will walk away from this workshop prepared and anxious to empower the infants and toddlers in their care with the gift of sign!

*Tracy Pond, CCR&R Program Manager, Derry, NH*

i/t				fcc
-----	--	--	--	-----

### C3 Teaching About Native Americans for Early Childhood Educators

Experience storytelling, arts, environmental explorations, and many other activities that introduce young children to Native American culture. Explore how to best connect Native American content to the themes and developmental stages of early childhood education. Try culturally appropriate hands-on activities.

*Native and Museum Educators and early childhood practitioners, Boston Children's Museum*

	ps	sa		fcc
--	----	----	--	-----

### C4 You Showed Each Other What?! Sexual Development of Young Children

In this workshop we will look at children's sexuality development from birth through their preschool years: what is natural and healthy and also identify "red flags" that merit further observation. Time for questions, to share concerns, and discuss cultural differences. Strategies for responding to classroom situations and parental concerns will be addressed.

*Claire Kurtz and Alison Morrisey, Early Childhood Mental Health Consultants*

i/t	ps	sa		fcc
-----	----	----	--	-----

### C5 Bullying in Early Childhood Programs: What to do?

Relational bullying between girls in early education and care programs is frequently overlooked. Boys who bully are often misunderstood. In this experiential workshop participants will learn: what causes young children to bully, who gets bullied, helpful interventions, and bullying prevention activities.

*Carol Wintle, Early Childhood Mental Health Consultant and Author of "Preventing Bullying and Name-calling," Belmont, MA*

	ps	sa		fcc
--	----	----	--	-----

### C6 Ticklin' and Tumblin' with Toddlers

Breeze through each day with a cache of simple lap bounces, transitional activities, songs and silliness developed just for toddlers. Program will include tickle time rhymes, beanbag and ball fun, use of instruments and many "Listen and Do" songs.

*Tina Stone, Music Specialist, Sheldonville, MA*

i/t				fcc
-----	--	--	--	-----

### C7 Bringing Science Alive

Can Raisins dance? Do solids drip? Using hands-on materials and experiments we will explore how to make science come alive for our young learners with common household materials. These activities are designed to help you integrate MA learning standards in a fun way.



*Patricia A. Keddie, Early Childhood Educator, Tewksbury, MA*

	ps	sa		fcc
--	----	----	--	-----

### C8 Yoga & Creative Movement PLAYshop

This PLAYshop will give you many ideas for moving yoga off the mat and infusing joy into your day. Help children experience the joy of movement while expressing their creativity. Have fun together, increase body awareness, coordination, self expression and cooperation. Wear comfortable clothes and get ready to move, groove and relax.

*Julie Simon and Kathy Cook, Certified Kids Yoga Instructors, Dracut, MA*

i/t	ps	sa		fcc
-----	----	----	--	-----

### C9 Using Reggio Concepts: How Listening to Children Influences Our Curriculum

Learn how a teacher inspired by the Reggio Emilia approach to educating children turned a simple conversation into a seven-month project. This presentation will focus on the benefits, joys and challenges of listening to children as a way to further curriculum.

*Leah Rescia, Preschool Teacher, Northampton, MA*

	ps			fcc
--	----	--	--	-----

## AFTERNOON SESSION C, CONTINUED

### C10 Storytelling That Evokes Imagination and Education

Add Storytelling to your teaching repertoire! This uplifting, high-energy workshop teaches different storytelling techniques to foster proactive listening, oral language, reading and writing skills, and the sheer enjoyment of the magical imagination of stories.

*Shawn Middleton, Storyteller, Durham, NH*

i/t	ps	sa		fcc
-----	----	----	--	-----

### C11 More Mud Puddles, Nature Walks, And Fairy Houses, Oh MY!

Children need a sense of place and belonging. Explore how connecting children with the natural world helps do just that. Participate in hands on nature and water experiences and explore how to integrate experiences into cognitive concepts.

*Johanna Booth Miner, Sarah Miner, Directors, Live and Learn ELC, Lee, NH*



	ps	sa		fcc
--	----	----	--	-----

### C12 Respect, Responsibility and Other Values

The values we impart on our children today will have a major impact. This session will explore the topic of character education and the five ways that values are taught. Universal values present in every culture will be the focus.

*Jeanine K. Fitzgerald, Certified Behavior Specialist, Better Behavior Bureau, Hubbardston, MA*

i/t	ps	sa	ad	fcc
-----	----	----	----	-----

### C13 Fired Up or Burned Out: If You Don't Care for Yourself, You Can't Care for Others

Resilience is the opposite of burnout. How do we sparkle with resilience and kick burnout to the curb? Learn practical strategies to maintain your energy while staying on your purpose.

*Holly Elissa Bruno, Educator, Consultant, Author, Sterling, MA*

i/t	ps	sa	ad	fcc
-----	----	----	----	-----

### C14 Say What? Approaching Difficult Conversations with Parents

Have you ever experienced that sinking feeling when needing to discuss sensitive matters with parents? This interactive workshop will explore what defines a difficult conversation, how to prepare, strategies to use, and how to follow-up.

*Christie Manganis, Licensed School Psychologist, Chelmsford, MA*

i/t	ps	sa	ad	fcc
-----	----	----	----	-----

### C15 Working with Staff: Having the Courage to Take Action

Working with people issues is the most difficult part of an administrator's job. There are always challenges that must be faced. So how do you do it? How do you bring up these subjects and maintain a professional and productive conversation?

*Lorraine Harris, Center Director, Dartmouth-Hitchcock Medical Center Child Care, Plainfield, NH*

i/t	ps	sa	ad	fcc
-----	----	----	----	-----

### C16 NAFCC Accreditation: Defining Quality for Family Child Care Providers

This informational session will be presented by the developer of the accreditation system. Hear about how it works, what local supports are available, the benefits and opportunities, and get all your questions answered.

*Kathy Modigliani, Family Child Care Project, Belmont, MA*

				fcc
--	--	--	--	-----

### C17 Practical Strategies for Understanding and Dealing with Behavior Problems

What is the cause of behavior problems? The root cause may be a neurological disorder, or just a child not adjusting to a classroom environment. In any case, the situation causes great distress for staff and the children alike. In this workshop, we will focus on how to confidently handle these situations both to avoid a crisis and deal with one once it arises.

*Janice Smestad, Empathy Associates, Merrick, NY*

i/t	ps	sa	ad	fcc
-----	----	----	----	-----

### C18 NAEYC Classroom Portfolios

This session will give you the latest information on the guidelines from NAEYC for organizing and providing documentation in your classroom portfolios. Participants will have the opportunity to view successful portfolios and share ideas and strategies.

*Debby Rawson and Diana L. Kane, Educators and Consultants, MA*



i/t	ps		ad	
-----	----	--	----	--

## Conference Location

Westford Regency Inn and Conference Center  
219 Littleton Road  
Westford, MA 01886

The Westford Regency is off Route 495, exit #32. Take a right at the first intersection. It is less than a mile down the road. Visit [www.westfordregency.com](http://www.westfordregency.com) or call 978-692-8200 for additional information. Parking is free.

## Access and Accommodation

The hotel has an elevator. All rest rooms are accessible. MassAEYC will honor reasonable requests for aids, services, or assistance. Please note your needs on the registration form.

## Exhibitors

Stroll the Exhibit Hall, which has exhibits of teaching materials, services and other items of interest to people involved with children from birth through school age. Please take advantage of the hall during breaks.

## Endorsement

MassAEYC assumes no responsibility for any statement of fact or opinions presented at the 2009 Conference, nor does acceptance of advertising or exhibits imply endorsement of products or services by the Association. Conference attendees are encouraged to present concerns about exhibits or presentations to the individual exhibitors and also inform staff at the registration desk.

## Tax Deductions

Expenses of training-including tuition (registration), travel, lodging, and meals-when incurred for the purpose of maintaining or improving your skills in your present profession are tax deductible. Please consult your tax advisor for details.

## Lodging

Please read the following information before calling to make reservations.

- Individuals make their own reservations, tell the hotel you are attending the MassAEYC conference.
- Reservations are first come, first served. If this hotel is booked, please try another in the area.
- Cancellations are made to the hotel directly, Check their policy.
- Registration for the conference does not register you for the hotel.

## Food

**BREAKFAST:** A free continental breakfast consisting of fresh fruit, assorted fruit breads and muffins, danish and croissant, coffee, tea, and fruit juices will be available in the exhibit hall both days.

**LUNCH:** In an effort to reduce the price on Friday and keep the costs down on Saturday, we will not be providing lunch either day. We hope that allowing you the option to make your own lunch choice will keep the conference affordable to all.



There will be three options for lunch:

- **Friday & Saturday:** The hotel will offer a pre-paid, buffet lunch consisting of a variety of soups and salads, bread/rolls, and dessert. The cost is \$15 and must be pre-paid with your registration. Selections will be different both days.
- The hotel will offer a concession stand with pre-made sandwiches, salads, and some hot items. The cost will be reasonable.
- Within five minutes of the hotel (by car) is every fast food restaurant you can think of. You are free to leave the premises and purchase food to go.



## HOST HOTEL INFORMATION:

### Westford Regency Inn

219 Littleton Road, Westford MA

978-692-8200

*Double Room Rate:* \$105/night, \$10/extra person

*Amenities:* Health club, indoor pool, jacuzzi, full service restaurant, in-room irons, hair dryers.

**Deadline for reservations is March 6, 2009.**

### NAEYC Membership

Your registration fee does **not** include membership in NAEYC. To receive the member discount, you must provide your valid NAEYC membership ID# which can be found above your name on the label of your *Young Children* journal.

To receive a membership ID# immediately, join NAEYC online at [www.naeyc.org](http://www.naeyc.org) or call NAEYC's Member Services at 800 424-2460, ext. 2002. VISA and MasterCard accepted.

Benefits include a subscription to *Young Children* journal, discounts to all AEYC events, monthly newsletter, public policy information, networking, and discounts on books and publications.

**NOTE: NAEYC membership must be in the name of an individual. A director's membership does NOT extend to other staff members. Also, NAEYC accreditation does not include membership in the Association.**

### Registration

To register fill out the registration form on the back of the brochure and mail it by **March 13th** to:

MassAEYC  
126 Phoenix Avenue  
Lowell, MA 01852

### Registration Fees

	FRI	SAT	BOTH
<b>NAEYC Member/Student</b>	<b>\$75</b>	<b>\$70</b>	<b>\$120</b>
<b>Non-member</b>	<b>95</b>	<b>90</b>	<b>165</b>
<b>Student Member</b>	<b>60</b>	<b>55</b>	<b>100</b>

*A student member is an individual taking two or more college courses at the time of the conference, who is also a member of NAEYC. Student memberships are \$35. Go to [www.naeyc.org](http://www.naeyc.org) to join. Please include copy of student ID.*

### Payment

Your payment must accompany the conference registration form. All registration must be prepaid. Please make your check payable to MassAEYC.

If you would like to pay by purchase order, please contact Marcia at the MassAEYC office 978-654-6053. Credit cards are not accepted.

### Refunds/Cancellations

All fees are non-refundable after March 13, 2009. Cancellations prior to March 13th will incur a \$25 processing charge per participant.

### Confirmation

You will not receive any confirmation unless your registration has not been accepted. Email the office if you have questions: [massaeyc@yahoo.com](mailto:massaeyc@yahoo.com).

### Questions about the Conference?

If you have any questions, call the MassAEYC office at 978-654-6053 or email us at [massaeyc@yahoo.com](mailto:massaeyc@yahoo.com).

### Workshop Selection

- Workshops will be assigned on a first come/first served basis. Presenters often limit the number of attendees. We will try to give you your first choice in every session, but it might not be possible.
- Please list three choices for the time slot you have chosen to attend.
- We are not responsible for workshop cancellations. We plan to have a group of substitute presenters who are able to present an acceptable alternative.
- Please be considerate of your colleagues and the presenters and do not attend a workshop that you have not registered for without checking at the front desk.
- The committee has staggered the workshop sessions so that participants can take advantage of spending some time in the Exhibit Hall.



Last year we sold out 2 weeks before the registration deadline.  
Do not delay – get your forms in EARLY!